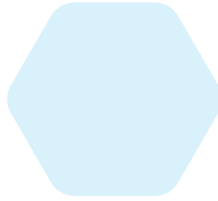




DYNAMIC™
HYDRAULICS



Ver. 1.1 | 2023

Hydraulic Clamping Devices

www.dynamichydraulics.co.in

GO DYNAMIC™

Compact cylinder

Product code: DC



Compact cylinder

Product code: DC



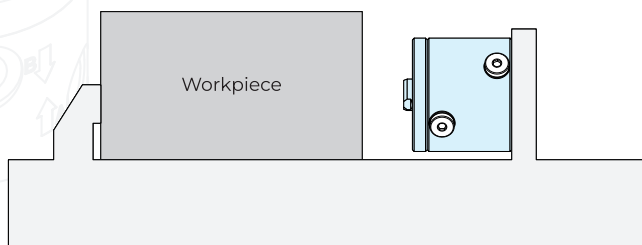
Information:

The **Compact cylinder** is designed to be space saving and compact product. **Dynamic Hydraulics** provides various sizes of **Compact cylinder**.

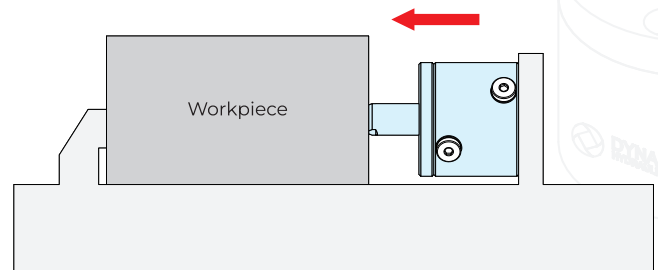
- Hardened and chromed alloy steel piston rods run longer with less wear
- Wiper seals reduce contamination of dust for the longer runs of the **Compact cylinder**
- Special coating on the cylinder body helps prevent rusting and scratching

Specifications:

- Minimum operating pressure: 10 Bar
- Maximum operating pressure: 150 Bar
- Operating temperature: 10 - 70 °C

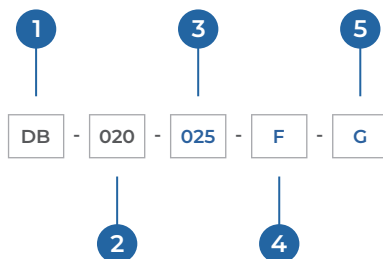


Released (Pulled) state



Locked (Pushed) state

Ordering method:



- 1 Product code
- 2 Bore diameter
- 3 Stroke range
- 4 Rod thread
- 5 Piping method

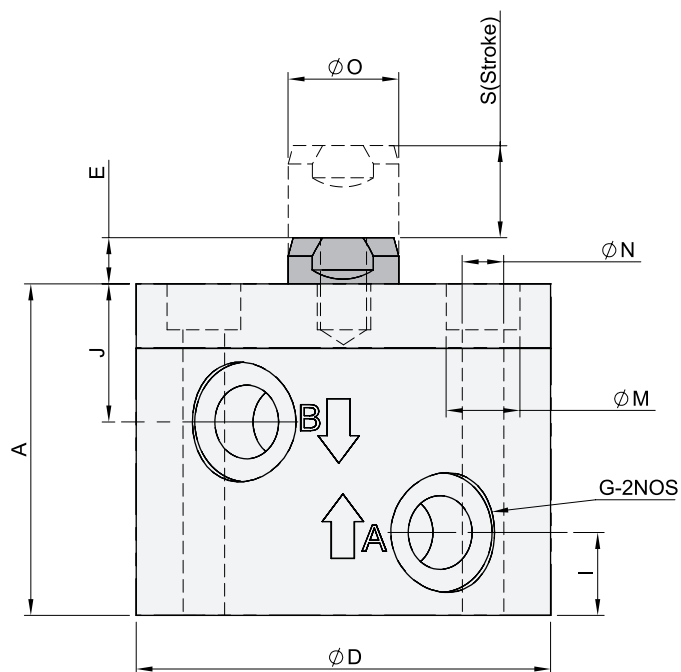
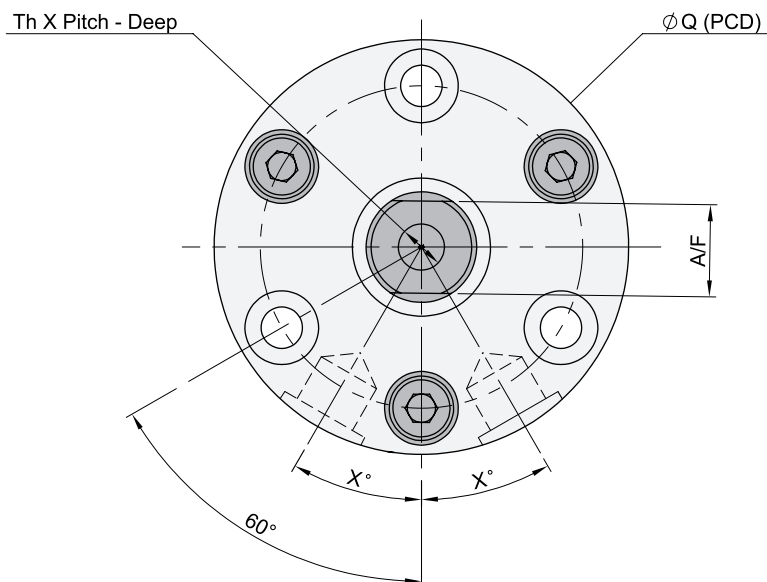
DC
020 032 040 050 063

010 025 050

F	Female thread
---	---------------

CT	Internal port at the top
CB	Internal port at the bottom
G	External piping
GC	External piping with internal piping

Compact cylinder



All dimensions are in mm except otherwise specified.

Compact cylinder

Model No.	DC - 020 - <input type="text"/>		DC - 032 - <input type="text"/>			DC - 040 - <input type="text"/>			DC - 050 - <input type="text"/>			DC - 063 - <input type="text"/>		
Stroke	010	025	010	025	050	010	025	050	010	025	050	010	025	050
Piston (Bore) Ø	20		32			40			50			63		
A	36	51	42	57	82	50	65	90	56	71	96	67	82	107
ØD	45		65			76			95			120		
E	5		5			6			6			6		
G	G1/8"		G1/8"			G1/4"			G1/4"			G1/4"		
I	9		8.5			12			12			12		
J	15		17			22			26			26		
ØM x Deep	7.5 x 4.5		10.5 x 6.5			13.5 x 8.5			16.5 x 10.5			16.5 x 10.5		
ØN	4.5		6.5			8.5			10.5			10.5		
ØO (Rod)	12		18			22			25			28		
ØQ (PCD)	35		50			60			75			96		
Thread x Pitch - Deep	M6 x 1 - 10		M10 x 1.5 - 18			M12 x 1.75 - 20			M16 x 2 - 30			M16 x 2 - 30		
A/F	10		16			19			22			25		
X°	30	30	30	30	0	30	30	0	30	30	0	30	30	0
Oil Volume Pushing (cc)	3	8	8	20	40	13	31	63	20	49	98	31	78	156
Oil Volume Pulling (cc)	2	5	6	14	28	9	22	44	15	37	74	25	63	125
Pushing Force (Kg.)	471		1206			1885			2945			4676		
Pulling Force (Kg.)	301		824			1314			2209			3752		

Ordering Method: [Product code - DC](#)

Note: Actual force may vary by 10% - 15% due to friction loss.

Warning: Operating above 150 Bar may damage the [Compact cylinder](#) and will void the warranty.




www.dynamichydraulics.co.in

The dimensions shown in the catalogue can be changed without prior notice to improve product quality.

Since certain products are undergoing research and development, please refer to our website for new updates.

Designed by: Exontric Systems

 +91 917 283 9607

 527, Shiye Bawada Road, Opposite
MIDC Shirol, Kolhapur - 416122,
Maharashtra, India.

GO DYNAMICTM